



**NUSI Offshore Training Institute (NOTI)
Mohamed Ebrahim Serang Centre (MESCC)**

Units of: NUSI / ITF Trust for Indian Seafarers

Training Initiative By National Union of Seafarers of India **(NUSI)**



National Union of Seafarers of India (NUSI)

Dedicated to the Welfare & Advancement of Indian Seafarers since 1896



NUSI SAKSHAM INITIATIVE

Quality Assured under NI & DNV's MTP Standard!

Adopting a holistic approach to the process of quality training, professional faculty team is involved in designing, developing, and delivering courses for maximum effectiveness. Also included in the overall system are the administrative aspects which support quality education and training. The courses fall under the preview of Maritime Training Provider (MTP) standards of DNV.

NUSI Offshore Training Institute developed as a state-of-art centre for Oil and Gas Offshore Training, expanded its scope with addition of impressive practical skill development facilities. Located in the outskirts of Mumbai, NOTI also provides residential facilities to candidates for the duration of course.

STRATEGIC PARTNERS POWERING NUSI SAKSHAM INITIATIVE

Academic Partner



Technology Partner



Industry Partner



Certification Partners



OUR TRAINING CENTERS



**NUSI Offshore Training Institute
NOTI, Panvel**



Website:
noti.nusiitf.in



Mail to:
info@nusiitf.org
notibooking@isfgroup.in



**Mohamed Ebrahim Serang Centre
MESC, Valsad**



Website:
mesc.nusiitf.in



Mail to:
info@nusiitf.org



022-6985-3333



National Union of Seafarers of India (NUSI)

Dedicated to the Welfare & Advancement of Indian Seafarers since 1896



TRAINING PROGRAMS OFFERED UNDER NUSI SAKSHAM



0% ZERO COST COURSES

- Pumpman Skill Enhancement Training (PMET) (10 Days)
- Basic of Corrosion Control & Painting (BCCP) (02 Days)
- Basic Welding Skill & Certification Program (BWCP) (3G) (06 Days)
- Lathe & Welding Skill Training (LWST) (06 Days)
- Deck Rating Skill Training (DRST) (06 Days)
- Engine Rating Skill Training (ERST) (06 Days)
- Hydraulic Driven Submerged Pumps - Basic (HSPB) (FRAMO) (02 Days)
- Hydraulic Driven Submerged Pumps- Advanced (HSPA) (FRAMO) (03 Days)
- Offshore to Main Fleet Bridging Course - Deck (OBCE) (06 Days)
- Offshore to Main Fleet Bridging Course - Engine (OBCE) (06 Days)

⚙️ SUBSIDISED COURSES

- Advance Welding Skill & Certification Program (AWCP) (6G LR) (12 Days)
- Plasma Arc Cutting Training (PACT) (02 Days)
- Structural Marine Fitter Training (SMFT) (06 Weeks)
- NUSI - FOSMA Pumpman / Fitter Skills Development Induction Program (PFIP) (08 Weeks)
- NUSI - FOSMA Pumpman / Fitter Skills Development Advanced Program (PFAP) (04 Weeks)
- Offshore Crane Operator Induction Course (COPI) (05 Days)
- Crane Operator Personnel Transfer Training (COPT) (03 Days)

0% ZERO COST COURSES

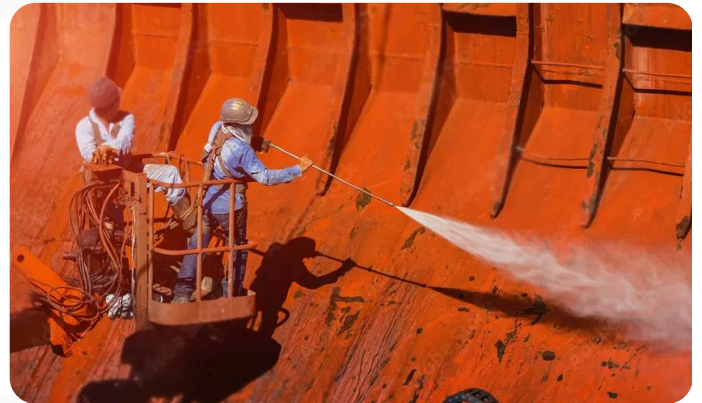


Pumpman Skill Enhancement Training (PMET): 10 Days

- Safety & Hazards on Tankers (Static Discharge).
- Role of Pumpman and Tanker Construction.
- Component of Pipeline, Types of Valve & Gasket making.
- Tanker Cargo and Ballast Operation (Principles and Practical).
- Tank Cleaning Machines (Principles & Practical).
- Types of Pumps (Principles & Practical).
- Work Ethics
- Basic Lathe & Welding Skill, Use of Measuring & Other Workshop Tools.

Basic of Corrosion Control & Painting (BCCP): 02 Days

- Corrosion principles and safe handling of paints and associated materials.
- Surface preparation using abrasive blasting, hydro blasting and power tools.
- Coating system / paint application & technical data of paints & MSDS.
- Enclosed space entry precaution for paint application & techniques.
- Uses & maintenance of airless spray painting equipment.



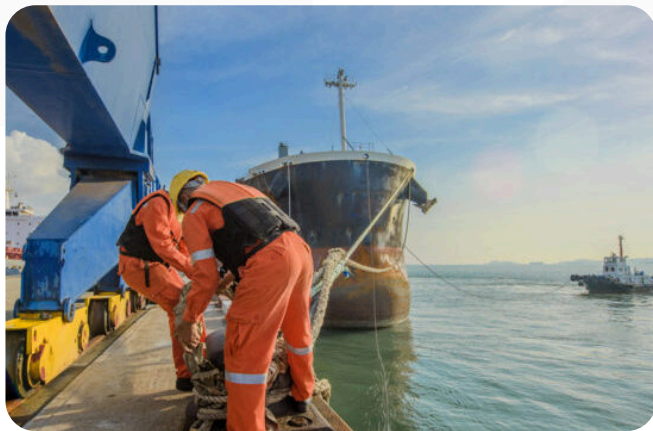
Basic Welding Skill & Certification Program (BWCP) (3G): 06 Days

- Health & safety issues associated with welding and hot working, with specific reference to the hazards/risks and precautions to be observed while working on board vessels.
- Familiarization and overview of welding machines, their operations, maintenance and troubleshooting.
- Basic understanding of welding procedure specifications (WPS), procedure qualification record (PQR) and welder performance qualification (WPQ).
- Practical training in welding work on plates/pipes, including SMAW processes up to 3G qualification.
- Weld defects—causes, identification and rectification. Basic Non-Destructive Testing (NDT) techniques and remedial actions to be taken for the prevention of welding defects.
- Welder Performance Qualification (WPQ) certification is subject to passing the radiography test of welding.



Lathe & Welding Skill Training (LWST): 06 Days

- Overview of lathe and welding machines and their operations.
- Safety aspects, types, characteristics, maintenance and troubleshooting associated with lathe and welding machines.
- Machining skills on the lathe, including facing, turning, threading, taper turning, boring, knurling, drilling, parting and step turning.
- Welding in SMAW processes to develop proficiency ranging from 1G to 4G and 1F to 4F positions (depending on entry-level skill).
- Measuring equipment for machined and welded jigs, including Non- Destructive Testing (NDT).
- Gas cutting and brazing.



Deck Rating Skill Training (DRST): 06 Days

- Safe working on board (hazard and risk assessment).
- Permit to Work System, and life-saving and fire-fighting systems.
- Bridge watchkeeping, steering and lookout duties.
- Refresher on basic seamanship, mooring and surface preparation for painting.
- Cargo, crane work & ISPS requirements on board.
- Basic carpentry, plumbing and use of tools.
- Electrical safety and use of power/pneumatic tools.
- Elements of social responsibility on board.

Engine Rating Skill Training (ERST): 06 Days

- Safe working on board (hazard and risk assessment).
- Life-saving and fire-fighting systems and permit to work.
- Engine watchkeeping, maintaining logbook & oil record book.
- Electrical safety & safe use of hydraulic and pneumatic tools.
- Enclosed space entry, toolbox talk and handling emergencies on board.
- Safe bunkering operations and gasket making.
- Operation & maintenance of engine room machinery, including different types of valves, pumps, generator cylinder head mountings, air compressors & purifiers (theory and practical).
- Overhauling of pumps, engine head, compressor and purifier.
- Elements of social responsibility on board.



Also Available at MESCS, Valsad

The above three skill development training programs are also conducted at our **Mohamed Ebrahim Serang Centre (MESCS)** in Valsad, Gujarat.



Hydraulic Driven Submerged Pumps (FRAMO): (Basic - 02 Days, Advanced - 03 Days)

- Basic concepts of hydraulics and centrifugal pumps. Components of hydraulic systems and their representative symbols in circuit drawings.
- Speed control valve – operation.
- Advantages of using submersible pumps on commercial tankers.
- Description of a typical hydraulic-driven submersible pump system with all its components, their purpose and pump design, including safety devices/emergency overrides.
- Cargo pump performance curves (HQ curves).
- Various cargo operations using a hydraulic-driven submerged pump system.
- Basic troubleshooting during operations, purging routines and analysis of results.
- Use of portable pumps in emergencies and related precautions.
- Practical demonstration of operating a hydraulic-driven submersible pump system during loading/discharging/stripping/purging, etc.
- Planned and breakdown maintenance of FRAMO pumps.



Offshore To Main Fleet Bridging Course - Deck / Engine (OBCE / OBCE): 06 Days

- Understanding of steering orders and compass points; steering systems including emergency steering systems.
- Substantial hands-on steering practice in open and congested waters.
- Basics of bridge watchkeeping and cargo-related emergencies.
- Soft skills aspects, including the importance of mental health.
- Power tools and safe practices while handling power tools, including hydro-blasting and spray-painting machines; permit-to-work systems and best practices for rope care.
- Enclosed space procedures (theory + mock-up practicals).
- Introduction to the Maritime Labour Convention.
- MARPOL (handling spills, SOPEP, SMPEP, garbage management, etc.).
- Cargo systems of different types of main fleet vessels and basic operations on main fleet crane simulator.
- Basic bridge equipment familiarisation (assisting OOW for lookout duties).
- Briefing on pilot ladders, combination ladders and accommodation ladders.
- Mooring and anchoring best practices and safety during the same.
- Boilers, incinerators, and hot wells – basic working and usage.
- Introduction to ballast water treatment systems, inert gas generator and fresh water generator.
- Propulsion types, including various fuels and a brief idea on scrubbers.
- H.O. purifier, two-stroke/four-stroke engines (theory + practical).
- Maintenance aspects of machinery.





SUBSIDISED COURSES

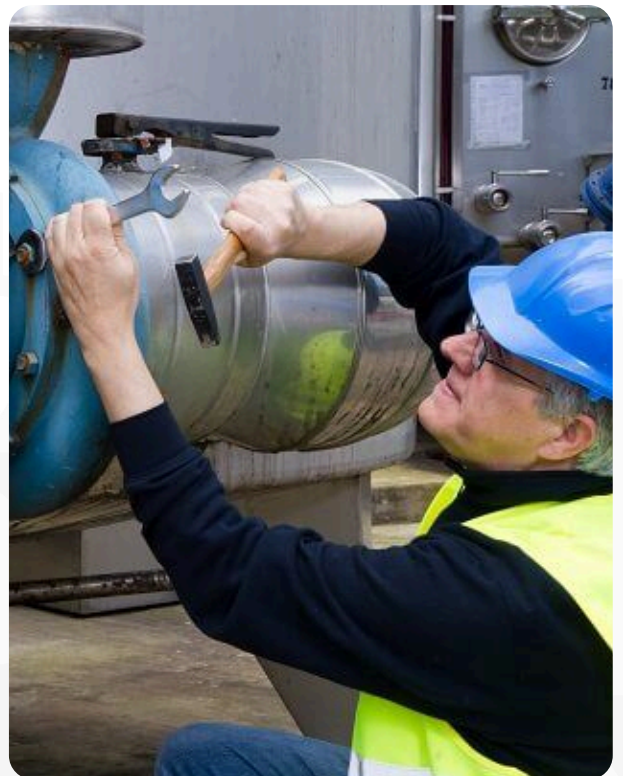


Advance Welding Skill & Certification Program (AWCP) (6G) (LR Class Certification): 12 Days

- Health and safety issues associated with welding and hot working.
- Various welding techniques, their characteristics and working principles, associated tools and measuring equipment.
- Basic understanding of welding procedure specifications (WPS), Procedure Qualification Record (PQR) and Welder Performance Qualification (WPQ).
- Practical training in welding work on plates/pipes, including SMAW processes up to 6G qualification.
- Weld defects – causes, identification and rectification. Basic non-destructive testing (NDT) techniques and remedial actions to be taken for prevention of welding defects.
- Welder Performance Qualification (WPQ) certification will be issued by Lloyd's Register, subject to passing the radiography test of welding.

NUSI - FOSMA Pumpman / Fitter Skills Development Induction Program (PFIP): 08 Weeks

- Safety and hazards on tankers (static discharge).
- Role of pumpman and tanker construction.
- Components of pipelines, types of valves and gasket making.
- Tanker cargo and ballast operations (principles and practical).
- Tank cleaning machines (principles and practical).
- Types of pumps (principles and practical).
- Work ethics.
- Overview of lathe and welding machines and their operations.
- Safety aspects, types, characteristics, maintenance and troubleshooting associated with lathe and welding machines.
- Machining skills on lathe, including facing, turning, threading, taper turning, boring, knurling, drilling, parting and step turning.
- Welding in SMAW processes to develop proficiency ranging between 1G to 4G and 1F to 4F positions (depending on skill at entry level).
- Use of measuring equipment for machining, making of jigs for pipe welding, including non-destructive testing (NDT).
- Plasma cutting, gas cutting and brazing.



NUSI SAKSHAM INITIATIVE

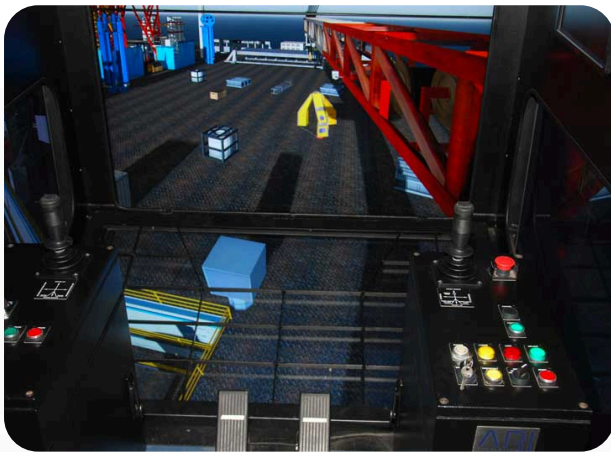


Structural Marine Fitter Training (SMFT): 06 Weeks

- Lathe and welding machines and their operations, including safety aspects, types, characteristics, maintenance and troubleshooting.
- Machining skills on the lathe, including facing, turning, threading, taper turning, boring, knurling, drilling, parting and step turning.
- Welding in SMAW processes to develop proficiency ranging from 1G to 4G and 1F to 4F positions (depending on skill at entry level).
- Use of measuring equipment for machining and making of jigs for pipe welding, including non-destructive testing (NDT).
- Plasma cutting, gas cutting and brazing.

Plasma Arc Cutting Training (PACT): 02 Days

- Safety precautions during PAC.
- Process and theory of PAC (gases used, system components and types of arc).
- Practice of PAC for gouging, straight cut, square cut, V-shape cut and circle cut (manual).

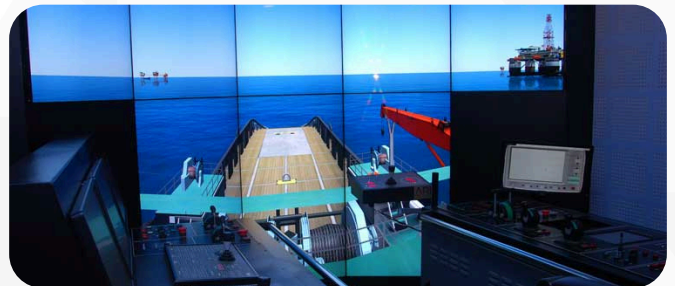


Offshore Crane Operator Induction Course (COPI): 05 Days

- Crane terminology
- Roles and responsibilities
- Crane cabin control
- Crane strength and stability configurations
- Safety devices and operational limitations
- Wire rope construction and use
- Maintenance and inspection requirements
- Safe lifting operations
- Hands-on practice sessions

Crane Operator Personnel Transfer Training (COPT): 03 Days

- Crane terminology
- Personnel transfer system
- Risk assessment
- Simulator exercises



National Union of Seafarers of India (NUSI)

Dedicated to the Welfare & Advancement of Indian Seafarers since 1896



OFFSHORE DP COURSES

Quality Assured under NI & DNV's MTP Standard!

Adopting a holistic approach to the process of providing quality training. A professional faculty is involved in designing, developing, and delivering courses for maximum effectiveness. Also included in the overall system are the administrative aspects which support quality education and training. The courses curriculum also meets the requirements of IMO circular MSC 738 as revised and IMCA circular 117 as revised.

- The **Induction Course** is predominantly theory-based with guided practical exercises that introduce the trainee to various DP operational modes.
- The practical element of this course requires the use of a DP system which is installed in our training centre and delivered with an adequate level of simulation on ARI Class C Simulator.
- The **Simulation Course** is based on practical exercises conducted on ARI Class B Simulators with theory involved that introduce the trainee to various DP operations & principles.
- The **Revalidation & Refresher & Competency Assessment Course** is intended for those who have already been issued a DPO Certificate from the NI but are unable to revalidate their DPO Certificate if they have not gained sufficient DP sea time. The overall course aim is to update the DPOs with the latest rules and regulations, position references and sensors, known DP incidents and lessons learned.
- The Revalidation & Refresher & Competency Assessment Course is based on practical exercises conducted on ARI Class B Simulators with theory involved that introduce the DPOs to refresh various DP operations & principles.
- The **Vessel Maintainer Course** targets engineers and ETOs currently on offshore DP vessels or transitioning from the main fleet to offshore DP vessels. Its primary goal is to refresh DPEs on DP knowledge, Rules & Regulations relevant to offshore DP vessels, and fault detection.

OUR STRATEGIC PARTNERSHIPS

Academic Partner



Technology Partner



Certification Partner



National Union of Seafarers of India (NUSI)

Dedicated to the Welfare & Advancement of Indian Seafarers since 1896



OFFSHORE DP COURSES



Basic (DPBC): 05 Days

- Introduction and basic concepts of DP
- Components of DP
- Types and equipment classes of DP
- Position reference systems and various sensors used in DP
- Operational activity planning
- Failure modes, effects and critical analysis
- Thruster, maneuvering and power management systems
- Basic DP operation and control modes
- DP bridge procedures

Advanced (DPSC): 05 Days

- Operational activity planning
- Position reference systems and various sensors used in DP
- DP systems and equipment classes
- Thrusters, maneuvering and power management systems
- Heading, motion, and environmental sensors
- DP control modes
- DP vessel operation – advanced
- DP system alarms and DP failures



National Union of Seafarers of India (NUSI)

Dedicated to the Welfare & Advancement of Indian Seafarers since 1896



Revalidation (DPRC): 05 Days

- Position reference systems
- DP system types and equipment classes
- Capability plots, footprint plots, consequence analysis and failure mode effects and analysis
- DP bridge procedures and sensors
- ASOG-TAM-CAMO (Operational activity planning)

Vessel Maintainer (DPVM): 05 Days

- Types of DP vessels
- DP class/equipment classes – IMO guidelines and classification society rules
- The power system of a typical DP vessel
- Bus-tie requirements per IMO/Class/FMEA
- Electrical systems and cabling
- Power management system custom setups and IMO DP equipment class 2/3 requirements
- Position reference sensors
- Planned maintenance system





noti.nusiitf.in
mesc.nusiitf.in